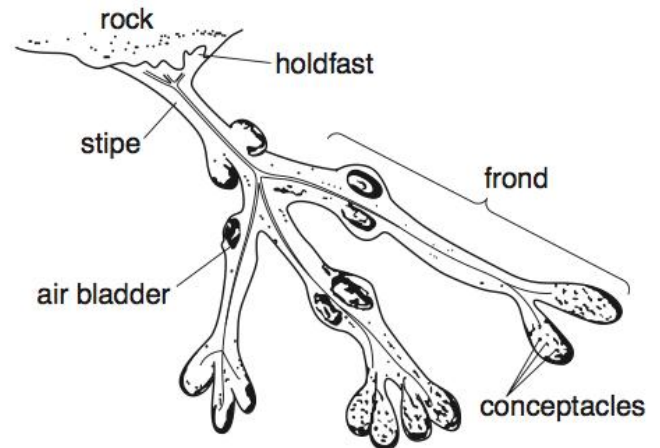


1. Suggest why drugs to treat asthma attacks are administered by inhalation (via an inhaler) rather than in tablet form. [3 marks]

2. The diagram on the right shows the structure of the brown seaweed, *Fucus vesiculosus*. This seaweed grows near to the beach and is exposed when the tide goes out. A layer of slimy mucus prevents it drying out. The photosynthetic pigment fucoxanthin is present in its cells which give it a brown colour. Its cells also contain chlorophyll. The tips of the fronds contain conceptacles which are required in sexual reproduction.



Use the diagram and information above to describe and explain **two** ways in which *F. vesiculosus* is well adapted to photosynthesise in shallow water. [4 marks]